

MBA IN

Software Engineering

MBAUSP
ESALQ



ONLINE
COURSE



MBA in Software Engineering

“Increasingly complex scenarios have required different competencies from managers and decision makers. It is essential for Information Technology professionals and Software Developers to constantly stay up to date and develop the multidisciplinary skills and knowledge that will make all the difference in their professional lives.”

Prof. Luiz Paulo Fávero - Vice-coordinator

FACULTY

USP Professors and renowned professionals with experience in the private sector Get to know some of them:
*subject to change



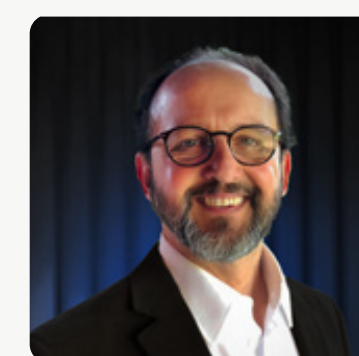
Adriana Caldana



Ana Carla Bliacheriene



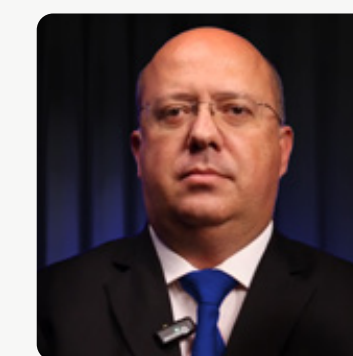
Denise de Moura



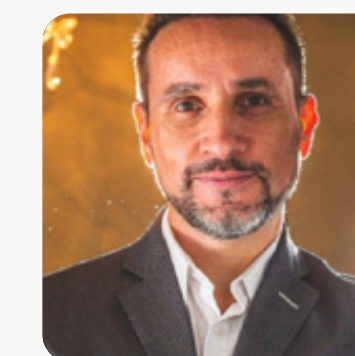
Edgard Stuber



Fabiano Castello



Fabiano Guasti Lima



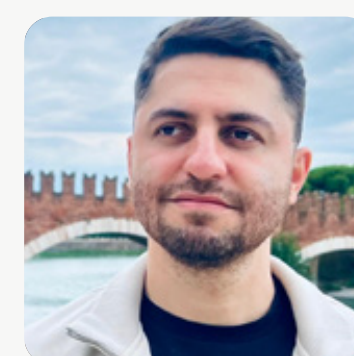
Fabio Junges



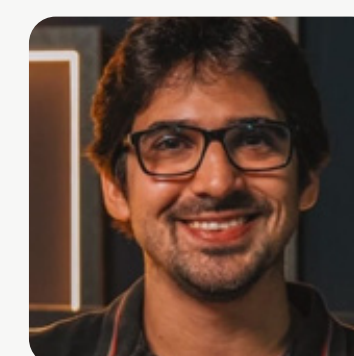
Gilberto Tadeu Shinyashiki



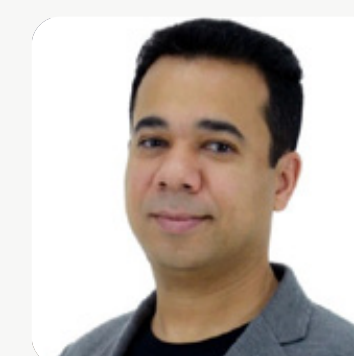
Gino Terentim



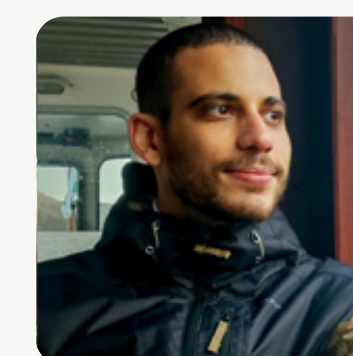
Guilherme Lima



Helder Prado Santos



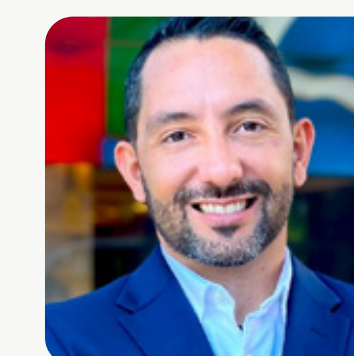
José Maria Cesario Junior



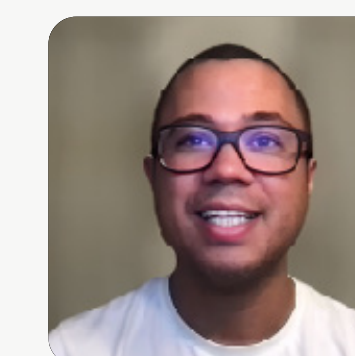
Luis Augusto Libório



Luiz Paulo Fávero



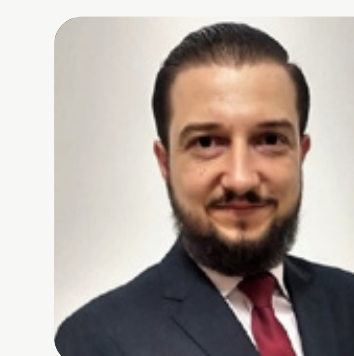
Marcelo Leite



Rogério da Rocha Rodrigues



Rosana Vaccare



Wilson Tarantin

COURSE PROGRAM

*Course program subject to changes

INTRODUCTORY MODULE – BOOTCAMP PATTERN

The introductory module was created with the goal of leveling the necessary knowledge of all students starting this MBA.

Dates and subjects:

- May 7, 2026– Course Opening
- May 11, 2026—Service containerization (Docker)
- May 14, 2026—Frontend Development I
- May 18, 2026—Frontend Development II
- May 21, 2026—Backend Development I
- May 25, 2026—Backend Development II

MODULE: DEVELOPMENT

Clean Architecture
Mobile Architecture
Domain Driven Design (DDD)
Event Storming in Software Projects
Test-Driven Development (TDD)
APIs Management and Structure
Queue Management and Structures
Change Management
Micro-front-end
Monitoring and Observability
Design Patterns
Software Development Paradigms

MODULE: MANAGEMENT AND CLOUD

Authentication and Security in
Microservices
Cloud Computing (IaaS, PaaS, SaaS)
Communication
Devops
Fundamentals of Information Security
Infra As Code (IAC)
Investments and Company Valuation
Agile Methods
Microservices
Container orchestration (Kubernetes)
Serverless
User Experience (UX)

MODULE: DATA AND BUSINESS

Non-Relational Databases
Relational Databases
Blockchain and Cryptocurrencies
Design Thinking
Data Engineering
Conflict Management
Emotional Intelligence
IoT
Regulation for the Digital Environment (LGPD)
Technical Leadership
Machine Learning Techniques
Trends in Artificial Intelligence and Big Data

MBA IN SOFTWARE ENGINEERING

COURSE INFORMATION

Weekly live classes on

THURSDAYS, FROM 7 TO 11 P.M. (BRT, UTC -3)

The content is recorded and remains available to be watched at any time during the course.

18 MONTHS OF CLASSES + BUSINESS CASE

The schedule can be extended by up to 3 months due to national holidays and recesses.

HOW ARE THE CLASSES?

Up-to-date content with online and live classes

The best way to ensure updated content and interaction between students and professors is through live classes. Prioritizing flexibility, the classes are online and recorded so you can re-watch them as many times as you like until the end of the course.

Online and weekly tests

After each class, students must take a test which remains available in the academic system for three weeks. There are 10 multiple-choice questions and three attempts. The highest grade obtained is the one considered in the final average (which must be equal to or greater than 7).

Attendance

Student attendance is calculated by taking the tests, and it must be equal to or greater than 75%. This way, there is no disadvantage for students who are unable to attend live classes, as they can watch it at their own convenience, whenever and wherever suits them.

Faculty

Course Program

Course Information

National and International Plan Investment

Frequently Asked Questions About the Course

Frequently Asked Questions About the Institution

Course translated into English and Spanish

Course in Portuguese for residents in Brazil

PLAN

INTERNATIONAL

NATIONAL

Classes with audio in Portuguese (BR)

✓

✓

Translation into English and Spanish

✓

X

International shipment of the gift

✓

X

Apostille certificate (Hague)

✓

X

Application fee

100 BRL

100 BRL

Installments

22x of 944.64 BRL

22x of 597.00 BRL

Payment method

Credit card or boleto*

Credit card or boleto*

*boleto only for residents in Brazil with a CPF number

INVESTMENT:

Frequently Asked Questions

ABOUT THE COURSE

Are there any prerequisites for this MBA?

Basic knowledge of technology and programming skills will be a prerequisite. However, an introductory leveling module will be offered in the following topics: Backend Development and Frontend Development.

We recommend that students who are unfamiliar with the basics of the course dedicate a little more time to the MBA and also attend all the leveling classes we offer.

Will we have practical classes?

Many of the classes will have a practical approach and must allow students to develop software, using methodologies and tools widely accepted in the market. In addition, planning, analysis, design, implementation, and software testing activities will be carried out during these classes, using programming languages, frameworks, libraries, and other relevant technologies.

What is the programming language used in the MBA?

The course will not have an official language. However, Open Source languages such as Javascript and Python will be prioritized. Nothing will prevent the faculty from using other languages in their examples.

Frequently Asked Questions

ABOUT THE COURSE

Does this MBA focus on Management?

The MBA will address technical, strategic, and management content. The goal will be to prepare professionals with hard skills who are able to make decisions through a wide repertoire of knowledge related to software engineering.

Are there events on the topics covered in the course that I should attend?

Yes! There are several relevant events for professionals in the field, such as the Web Summit, RoadSec, DigiTalks, and Campus Party, among others.

What is the introductory module for?

The introductory module is ideal for professionals who want to refine their knowledge and be consolidated in the area of Software development through relevant content on techniques, tools, and current methods used in the field.

Is the introductory module mandatory? (Attendance, absences, and tests)

Yes. The grade and attendance of the introductory module classes are monitored through the test available at the end of the introductory module classes.

Frequently Asked Questions

ABOUT THE INSTITUTION

HOW DOES THE BUSINESS CASE?

The Business Case is a mandatory requirement for completing the MBA USP/Esalq course. The Business Case presentation is online and carried out through a platform specifically for this purpose, which guarantees that this stage is conducted safely and in accordance with USP rules.

WILL THERE BE AN ADJUSTMENT IN THE INSTALLMENTS?

Installments will remain the same throughout the course, and the first installment must be paid within 7 days after the approval of the mandatory documents. The other due dates may be different according to the preference indicated in the application form.

WHAT IS REQUIRED FOR THE APPLICATION?

To be approved for enrollment, you must have a higher education certificate and personal documents. Check the rules on the website: [Documentation](#).

WILL I HAVE A PERSON RESPONSIBLE FOR MY ACADEMIC FOLLOW-UP?

Throughout your academic journey, you will have a coursefather/coursemother to support you and answer any questions you may have. They will participate in the following stages of the course: Application, academic follow-up, financial adjustments or issues, and Business Case development.

WHAT IS THE DIFFERENCE BETWEEN THE NATIONAL AND INTERNATIONAL PLANS (EN-ES)?



There are differences between the plans due to additional costs related to the apostille of the certificate (HAGUE), sending the gift, availability of a specialized Advising Team, and translation of support materials and tests into Spanish and English. All students will have the option of choosing between the national or international plan, according to their preferences.

For more questions about the MBA USP/Esalq, go to our [FAQ](#).



Rua Cezira Giovanoni Moretti, 580, Santa Rosa
Piracicaba/SP CEP: 13.414-157

info@mbauspesalq.com

  [+55 \(19\) 2660-3343](tel:+55(19)2660-3343)

    [/mbauspesalq](#)